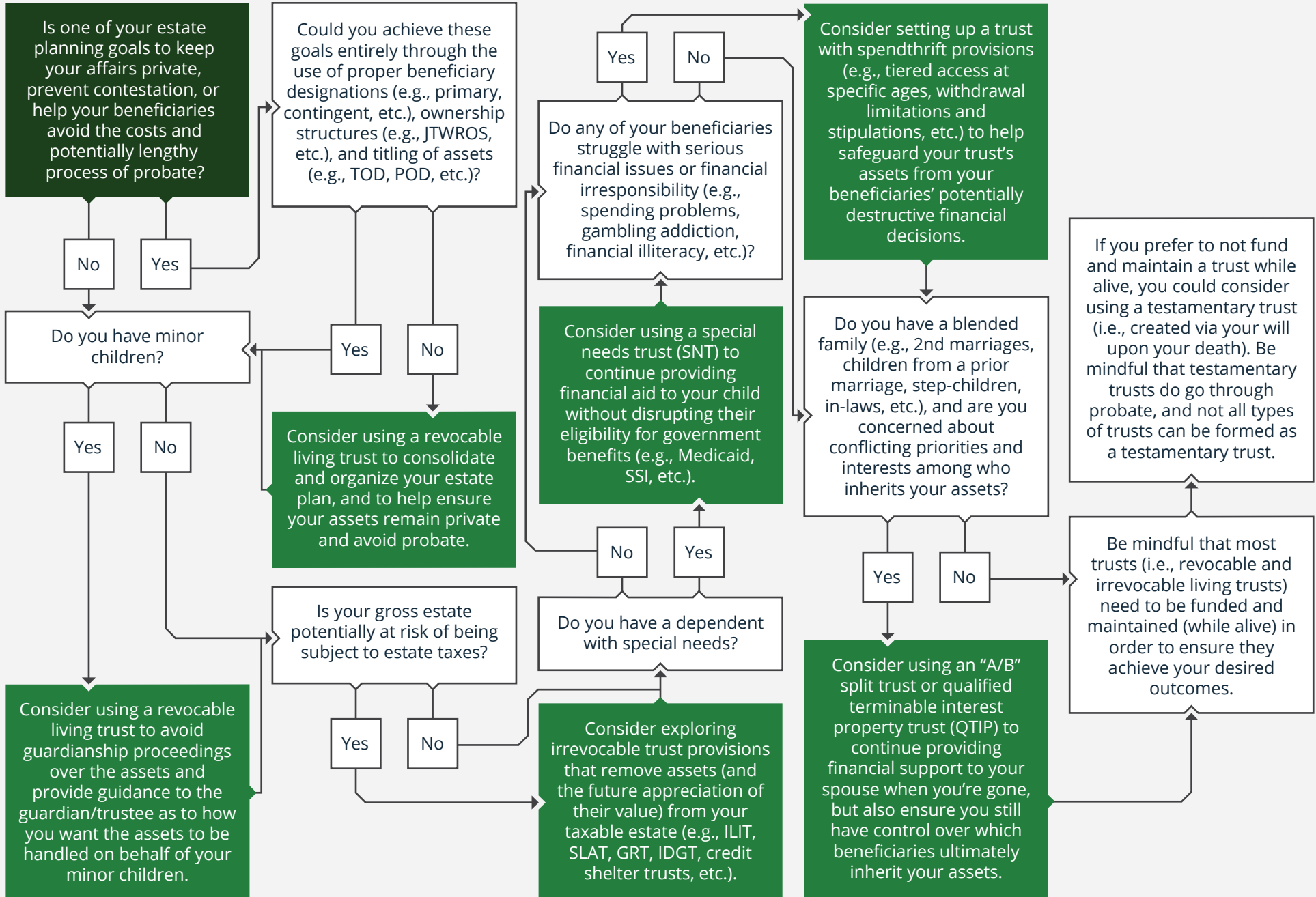


# 2025 · SHOULD I CONSIDER A TRUST?

**START HERE**



*Chad Heberly offers investment advisory services through Gradient Advisors, LLC (Arden Hills, MN 877-885-0508), an SEC Registered Investment Advisor. Gradient Advisors, LLC and its advisors do not render tax, legal or accounting advice. Prospera Investment Advisors, LLC is not a registered investment advisor and is independent of Gradient Advisors, LLC. Insurance products and services are offered through Chad Heberly, independent agent.*

*Prospera Investment Advisors, LLC, Chad Heberly, and Gradient Advisors, LLC are not affiliated with or endorsed by the Social Security Administration or any government agency*

## **Chad Heberly, Prospera Investment Advisors**

301 N Main St. Ste 202 Pueblo, CO 81003

Planning@ProsperaInvestmentAdvisors.com | 719.521.5097 | ProsperaInvestmentAdvisors.com